

PRE-PROJECT « AGRO VILLAGE »

non exhaustive project presentation
2013



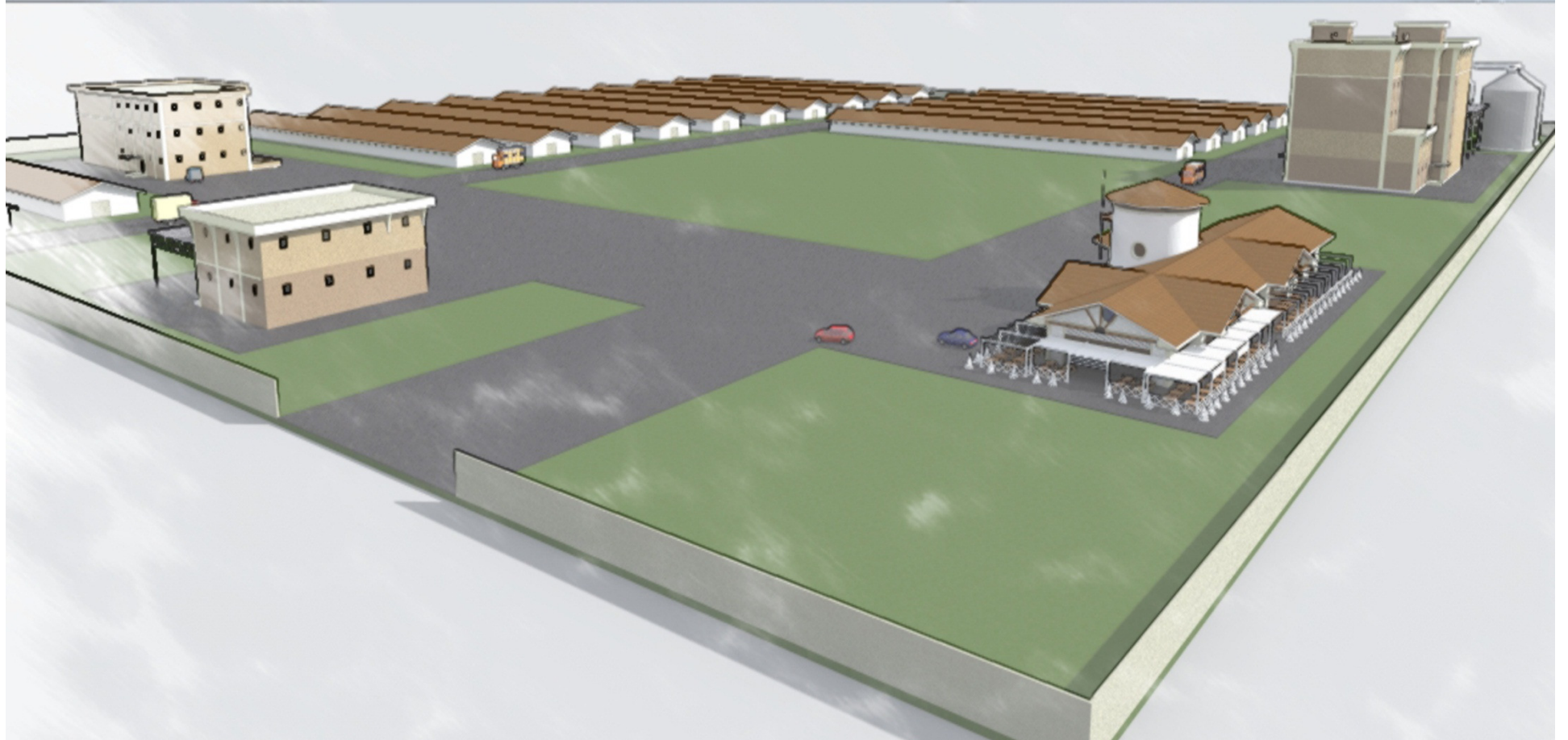


UN • YEM • MERMER • KULLUĞA



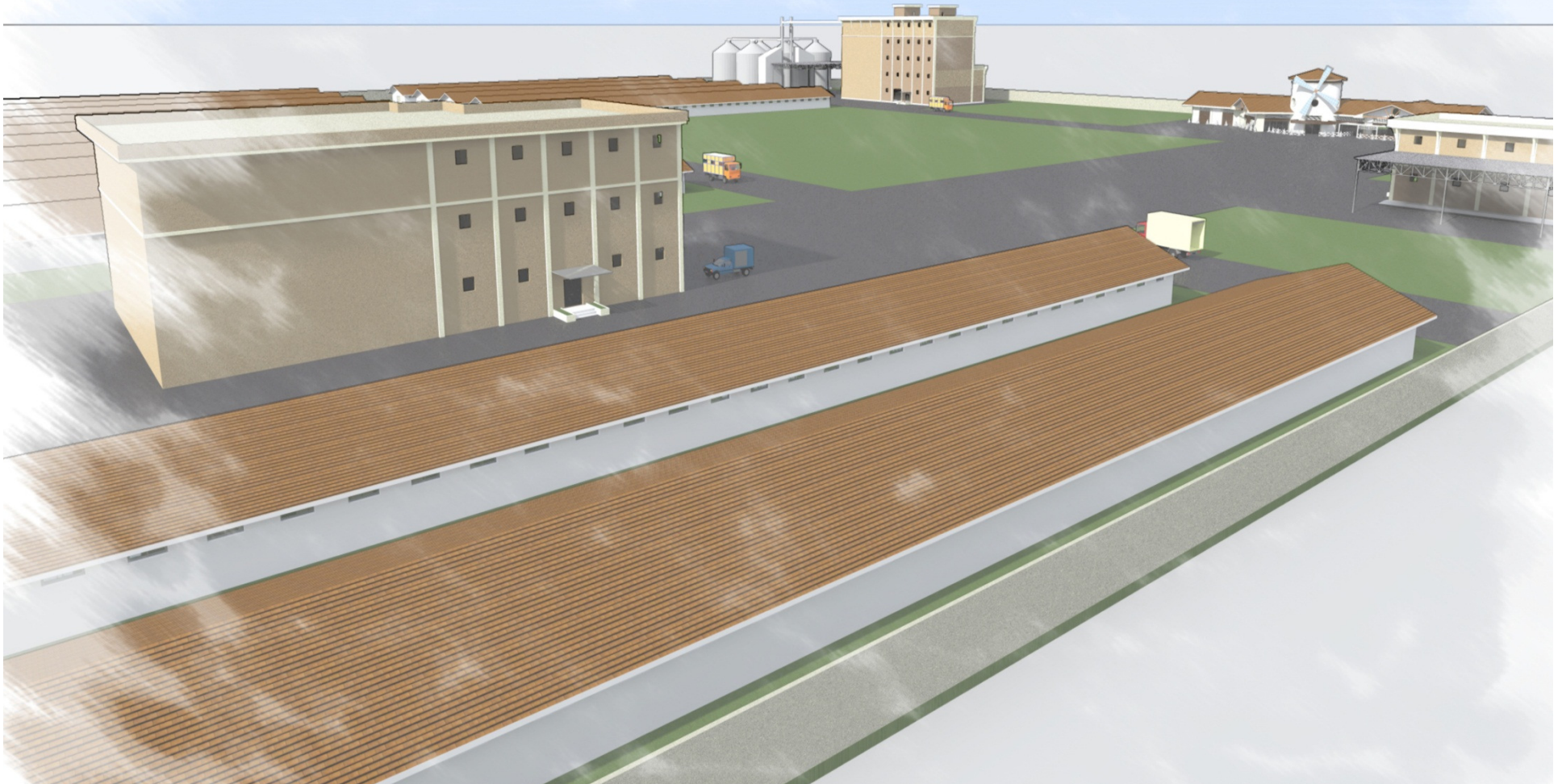


UN • YEM • MERMER • KULLUÇKA





UN • YEM • MERMER • KULUÇKA





UN • YEM • MERMER • KULUÇKA



NON EXHAUSTIVE LIST OF THE INVESTMENTS NEEDED TO LAUNCH THE PROJECT ON A 7 OR 10 HECTARS FIELD

A/ PLANT FOR LIVESTOCK FEED INCLUDING

1. DEFIBRATING AND OIL EXTRACTION OF COTTON SEEDS (OR OTHER) PRODUCTION AND PACKAGING OF COTTON MEALS - CAPACITY 120 TONS / DAY
2. OIL REFINERY - CAPACITY 10-12 TONS / DAY
3. PRODUCTION UNIT COMPLETE FOOD FOR LIVESTOCK (HENS, CHICKENS, CATTLE AND SHEEP MEAT, CATTLE AND SHEEP MILK ...) - CAPACITY 1500 TON / MONT
4. PRODUCTION LINE PLASTIC 25L jerry cans
5. PACKAGING LINE OIL IN PLASTIC 25L jerry cans
6. WAREHOUSE RAW AND FINISHED PRODUCTS

→ ESTIMATED COST: \$ 1.7 million

B/ 5 HENS FARMS, 20.000 HENS EACH USING LAST PRODUCTION TECHNOLOGY (PRICE OF HENS NOT INCLUDED)

→ ESTIMATED PERFORMANCE: 100,000 eggs per day → ESTIMATED COST: \$ 2,000,000

C/ 10 FARMS, 10000 BROILERS EACH USING LAST PRODUCTION TECHNOLOGY (PRICE OF CHICKS NOT INCLUDED)

→ ESTIMATED PERFORMANCE: 150 tons after 40-43 days of culture → ESTIMATED COST: \$ 2,000,000

D/ 1 SHED FOR DAIRY COWS (100 cows): UNITS OF TREATY INCLUDED (PRICE COWS NOT INCLUDED)

→ ESTIMATED PERFORMANCE: between 2.5 and 3 tonnes of milk per day → ESTIMATED COST: \$ 450,000

E/ 1 STABLE OF CATTLE (100) FOR MEAT (CATTLE PRICES NOT INCLUDED)

→ ESTIMATED YIELD: 30 tonnes (carcass) after 18 months → ESTIMATED COST: \$ 250,000

F/ 1 DAIRY PRODUCTS SMALL PLANT (CHEESE, ICE, YAGOURTS ...)

→ ESTIMATED COST: \$ 250,000

G/ 1 SLAUGHTER

→ ESTIMATED COST: \$ 350,000

H/ 1 RESTAURANT - BAKERY - MARKET (500 - 700m²)

→ ESTIMATED COST: \$ 400,000

ESTIMATED TOTAL COST OF THE PROJECT : 7.400.000 USD
ARCHITECT, TRANSPORT, INSTALLATION AND MAINTENANCE COSTS NOT
INCLUDED